



FOUNDED IN 1828

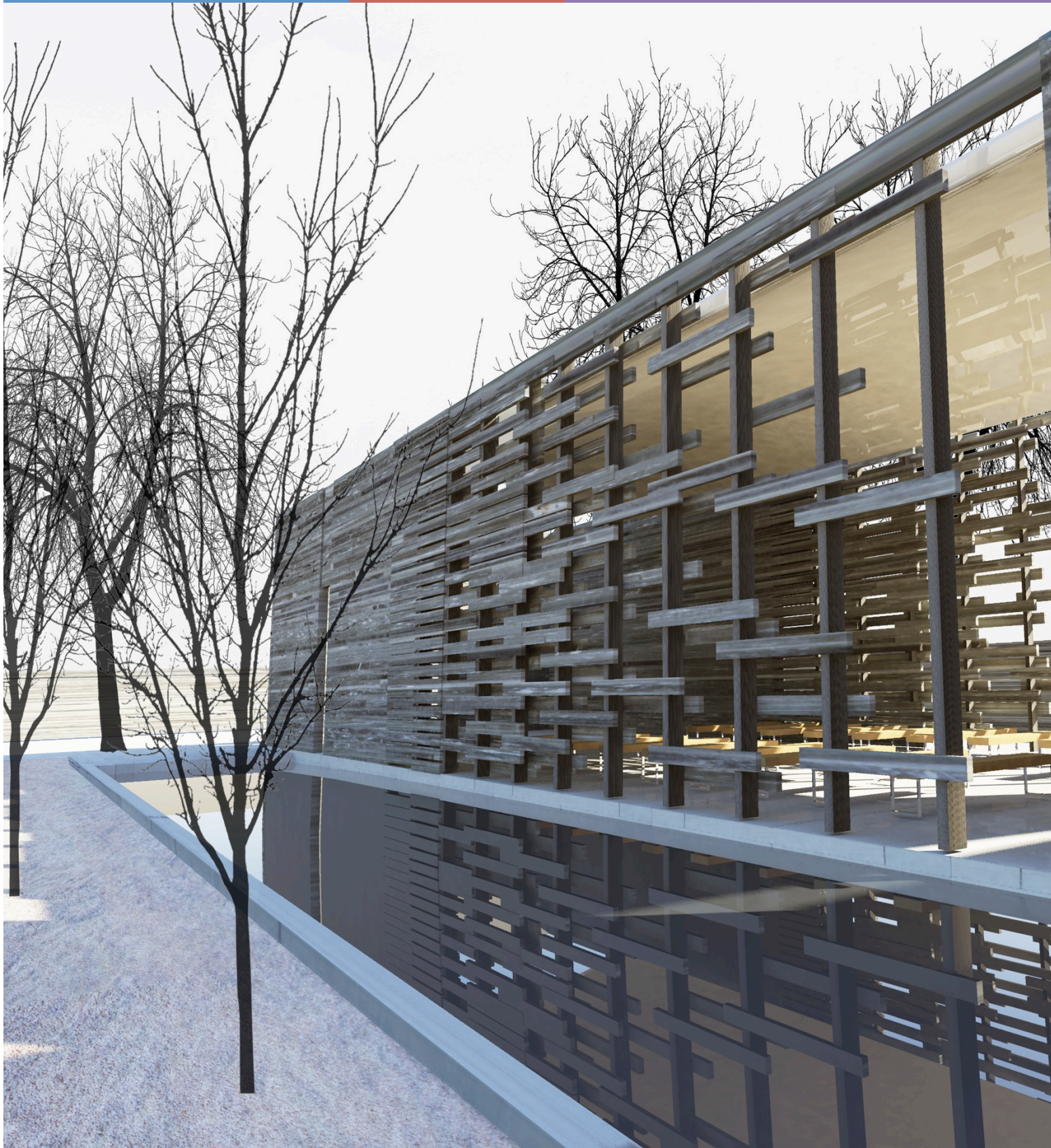
GLASNEVIN TRUST

DARDISTOWN  
NEWLANDS CROSS

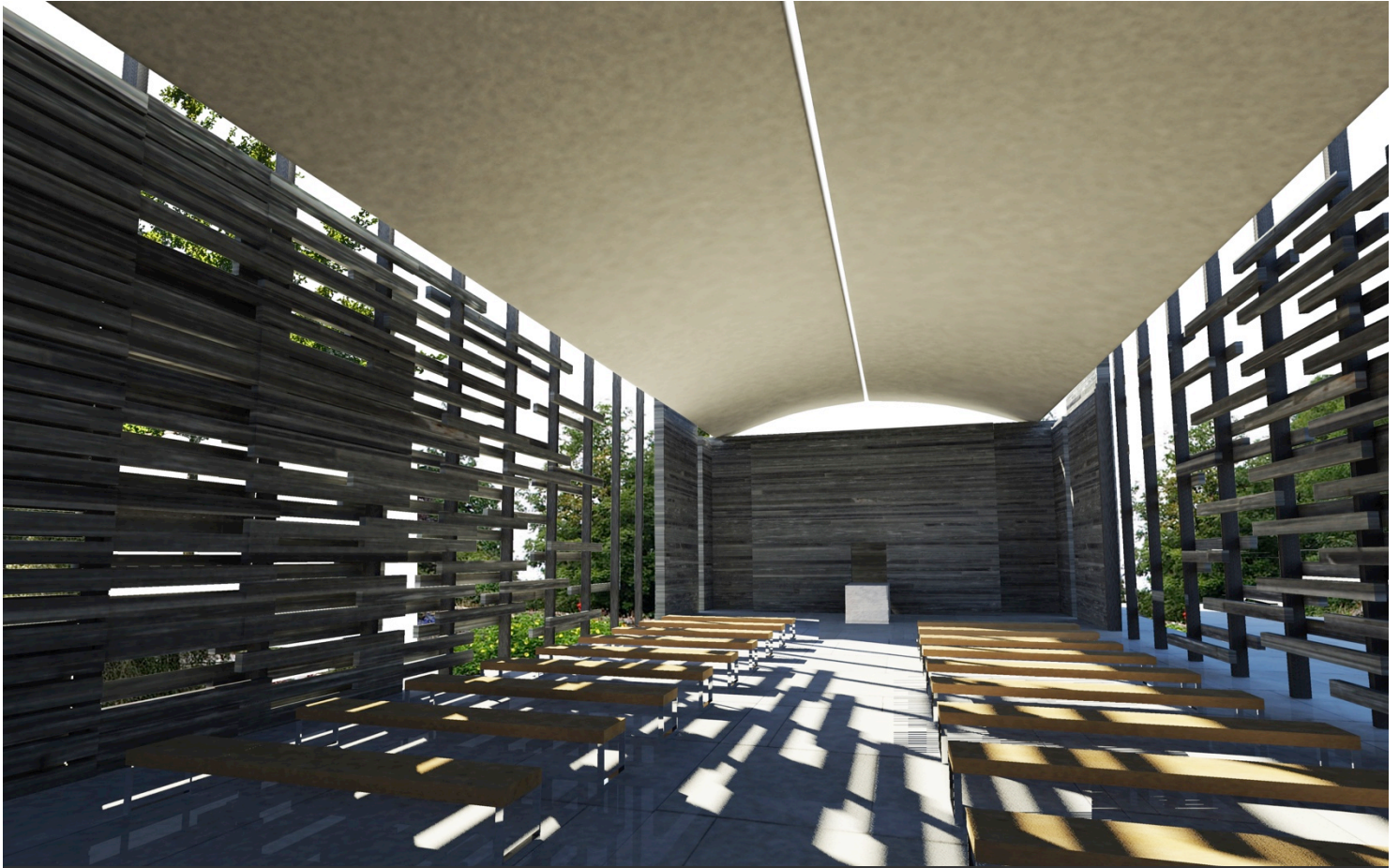
GLASNEVIN  
PALMERSTOWN

GOLDENBRIDGE

# The 1916 Citizen's Chapel







## Glasnevin Trust Public Information Evening

Thursday, 20 July 2017

### The 1916 Citizens' Chapel

This meeting will provide those present with the opportunity to learn more about 'The 1916 Citizens' Chapel', the construction timeline, its importance to Glasnevin Cemetery and the wider decade of centenaries program. A brief questions and answers session will take place at the end of the meeting for those with queries on the project.

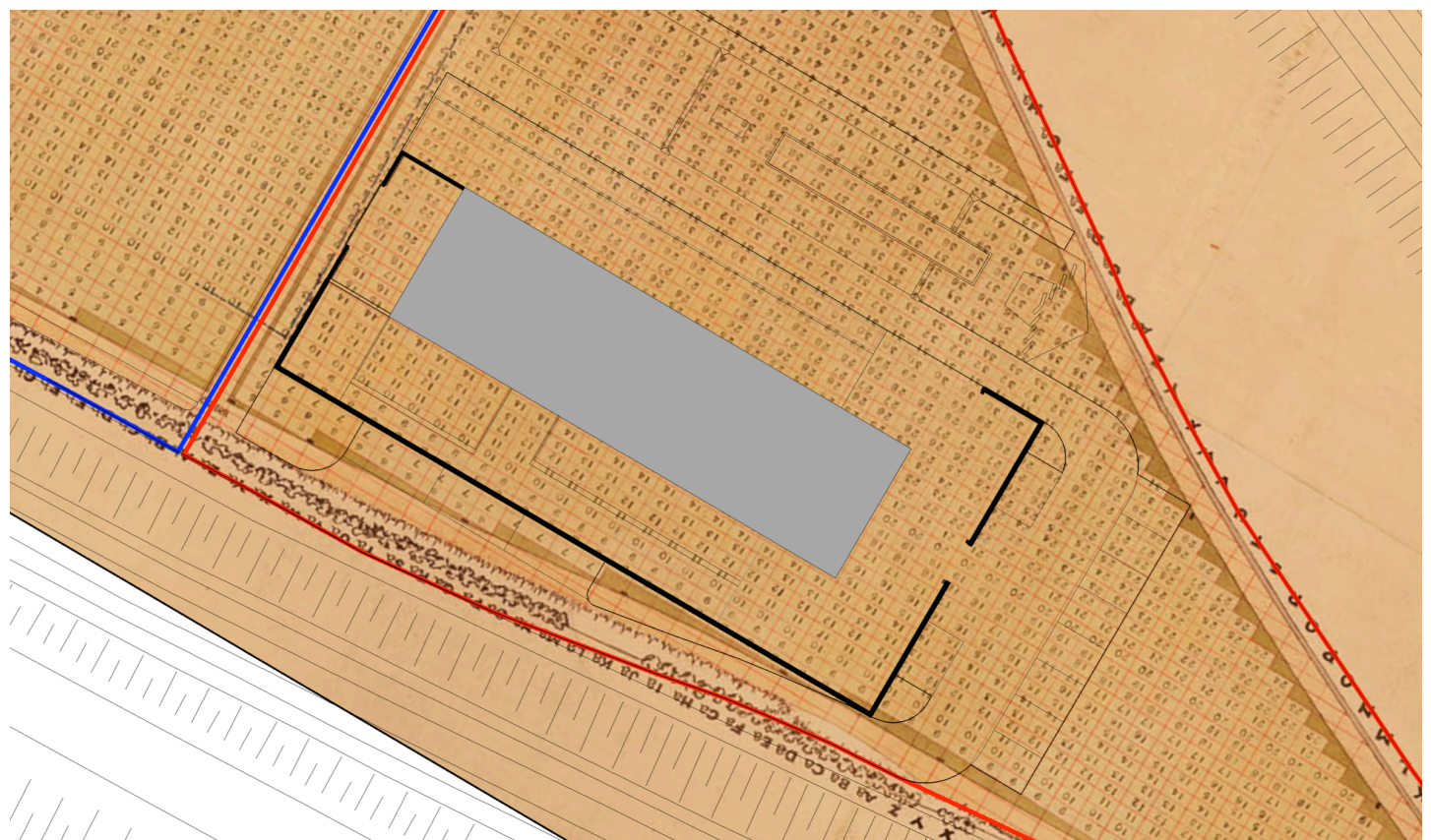
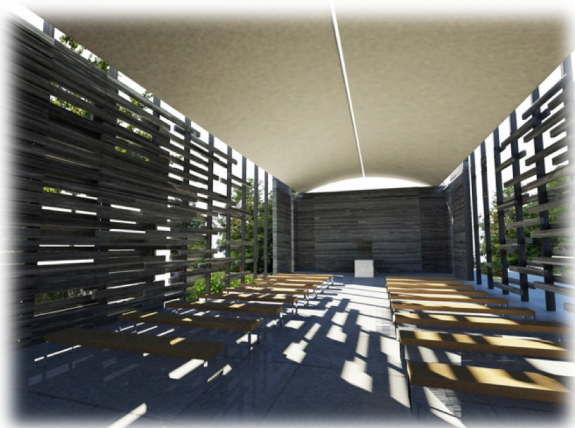
The 1916 Citizens' Chapel will be a memorial to all the citizens who died in the 1916 Easter Rising. Once complete, the interdenominational structure will serve as the only permanent memorial to the citizens who lost their lives in the 1916 Easter Rising. In addition, the chapel will also serve as a monument to

all of those who are interred in unmarked or unpurchased graves in Glasnevin Cemetery, and will provide a spiritual, contemplative and peaceful space in which to mourn those more recently deceased.

The 1916 Citizens' Chapel, which was designed by O'Daly Architects in Dublin, will be located in the St. Paul's section of the cemetery, on the Dublin poor ground.

Glasnevin Trust is operated by the Dublin Cemeteries Committee.  
Registered Charity Number 5849



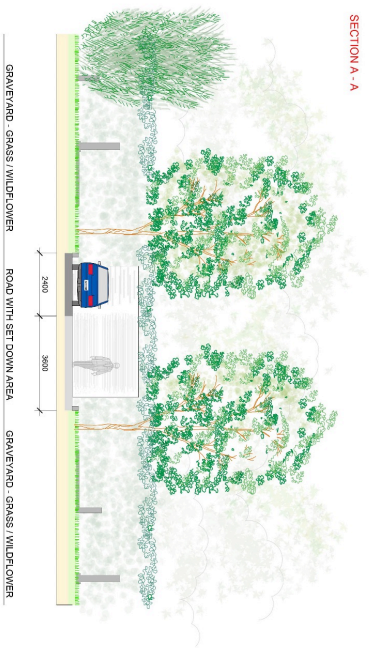




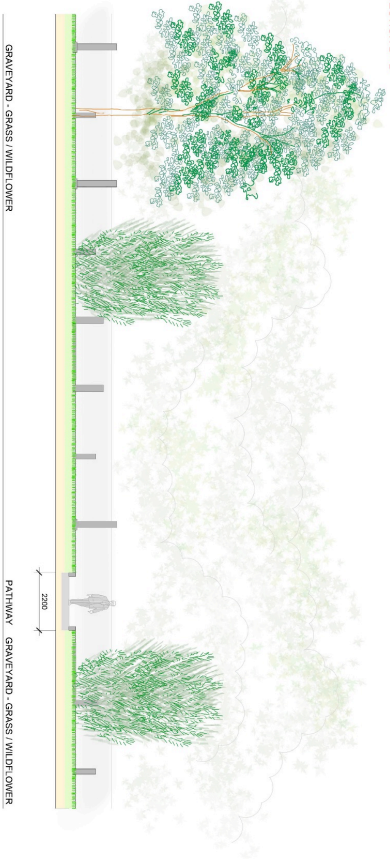




SECTION A - A



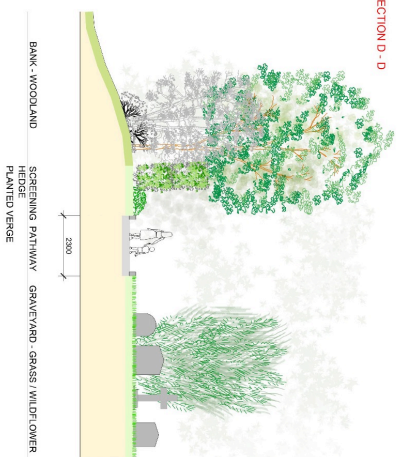
SECTION B - B



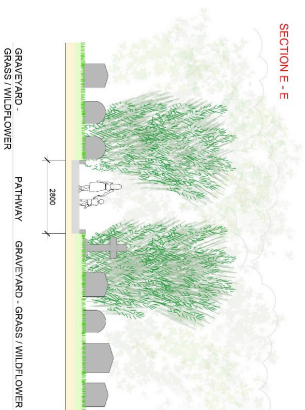
SECTION C - C



SECTION D - D



SECTION E - E



SECTION F - F



murray & associates

landscape architecture

101-1011, 1011, 1011, 1011

44-44, 44-44, 44-44, 44-44

T. 1 3501 1 884 0000

e: info@murrayassociates.com

www.murrayassociates.com

**Project Title:** Proposed Restoration Plan,  
St Paul's Cemetery,  
St Paul's Section, Dublin 9

**Client:** Glasnevin Trust

**Sheet Title:** Sections

**Sheet No.:** 1680\_SK\_P\_01\_Y4

**Project Architect:**

Scale:	1/100 @ A1	Revision:
Date:	28-10-16	0



