



GLASNEVIN
CEMETERY

NATIONAL
BOTANIC GARDENS

ROYAL CANAL

GAA
MUSEUM
and
CROKE PARK
STADIUM

MOUNTJOY
SQUARE

the
HUGH LANE

the
JAMES
JOYCE
CENTRE

the
GPO

EPIC IRELAND

Old
JAMESON
DISTILLERY

DUBLIN
TENEMENT
EXPERIENCE

1916 REBELLION
WALKING TOUR

GUINNESS STOREHOUSE



Total distance: 4 miles

DNA TRAIL 1.5 — 2 HOURS

No visit to Dublin would be complete without exploring the unique and fascinating DNA trail. Experience the vibrant and varied attractions that are a key not only to the character of Dublin city, but also to its people and the people of Ireland.

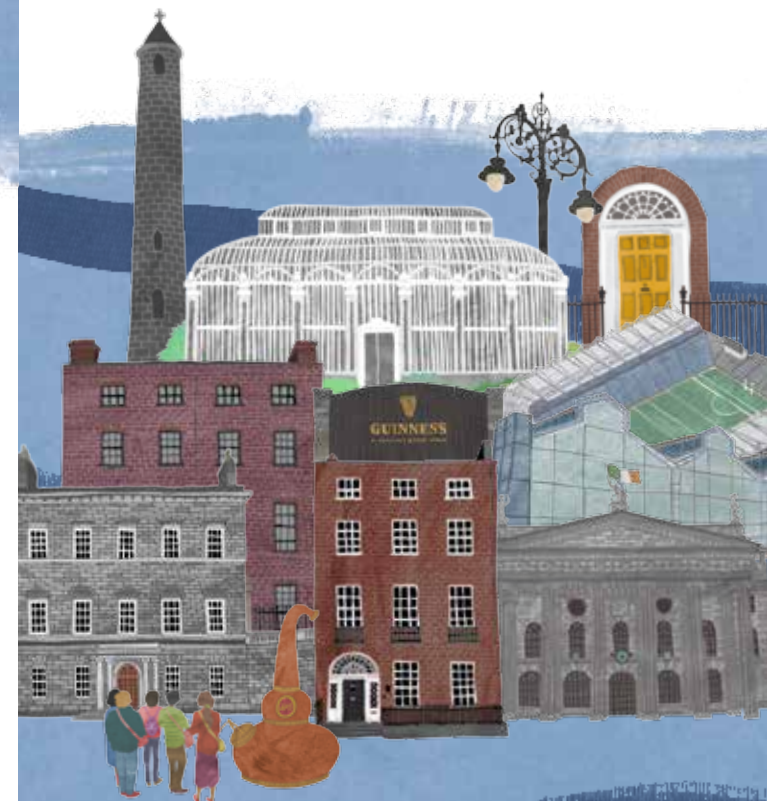
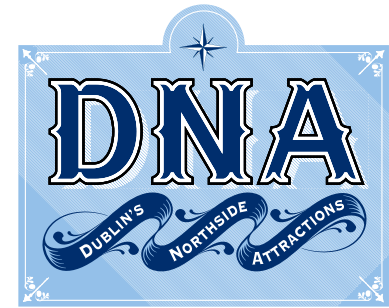
Dublin's Northside Attractions are DNA in name and in nature, revealing the people behind the places that are now landmarks of the Northside of Dublin and lasting monuments to its citizens – the colourful, the courageous, and the ill-fated; from the everyday working folk to the rebels, poets and pioneers.

Walk in their footsteps as the DNA trail affords you a vivid and enjoyable insight into the people who made Dublin – and Ireland – what it is today.

BY FOOT, BY BUS,
BY CAR, BY BIKE.
START OR FINISH
WHEREVER YOU LIKE.



WWW.DUBLINDNA.IE



DISCOVER DUBLIN'S DNA